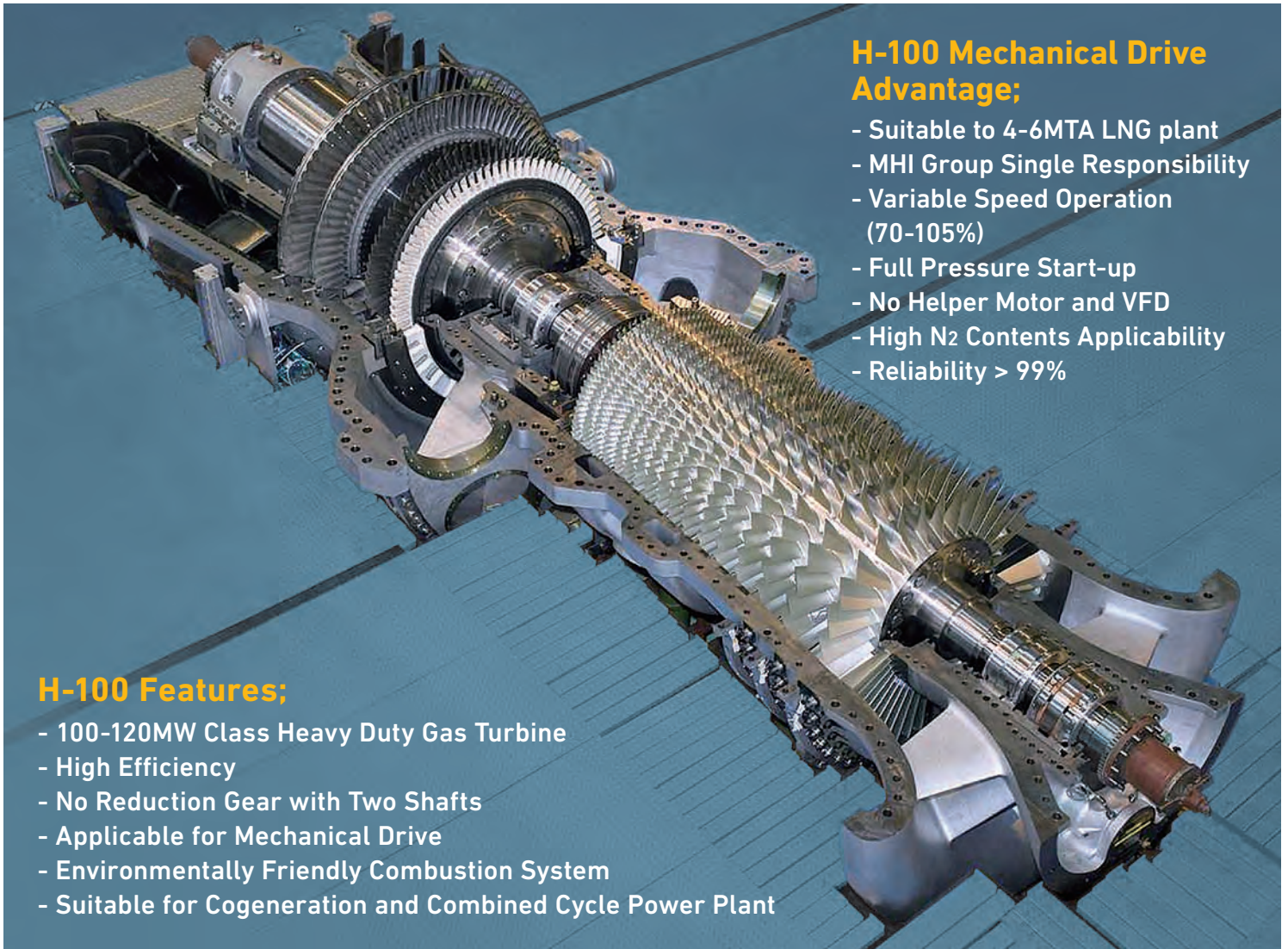


Mitsubishi Power Gas Turbine H-100

Mechanical Drive Application



H-100 Mechanical Drive Advantage;

- Suitable to 4-6MTA LNG plant
- MHI Group Single Responsibility
- Variable Speed Operation (70-105%)
- Full Pressure Start-up
- No Helper Motor and VFD
- High N₂ Contents Applicability
- Reliability > 99%

H-100 Features;

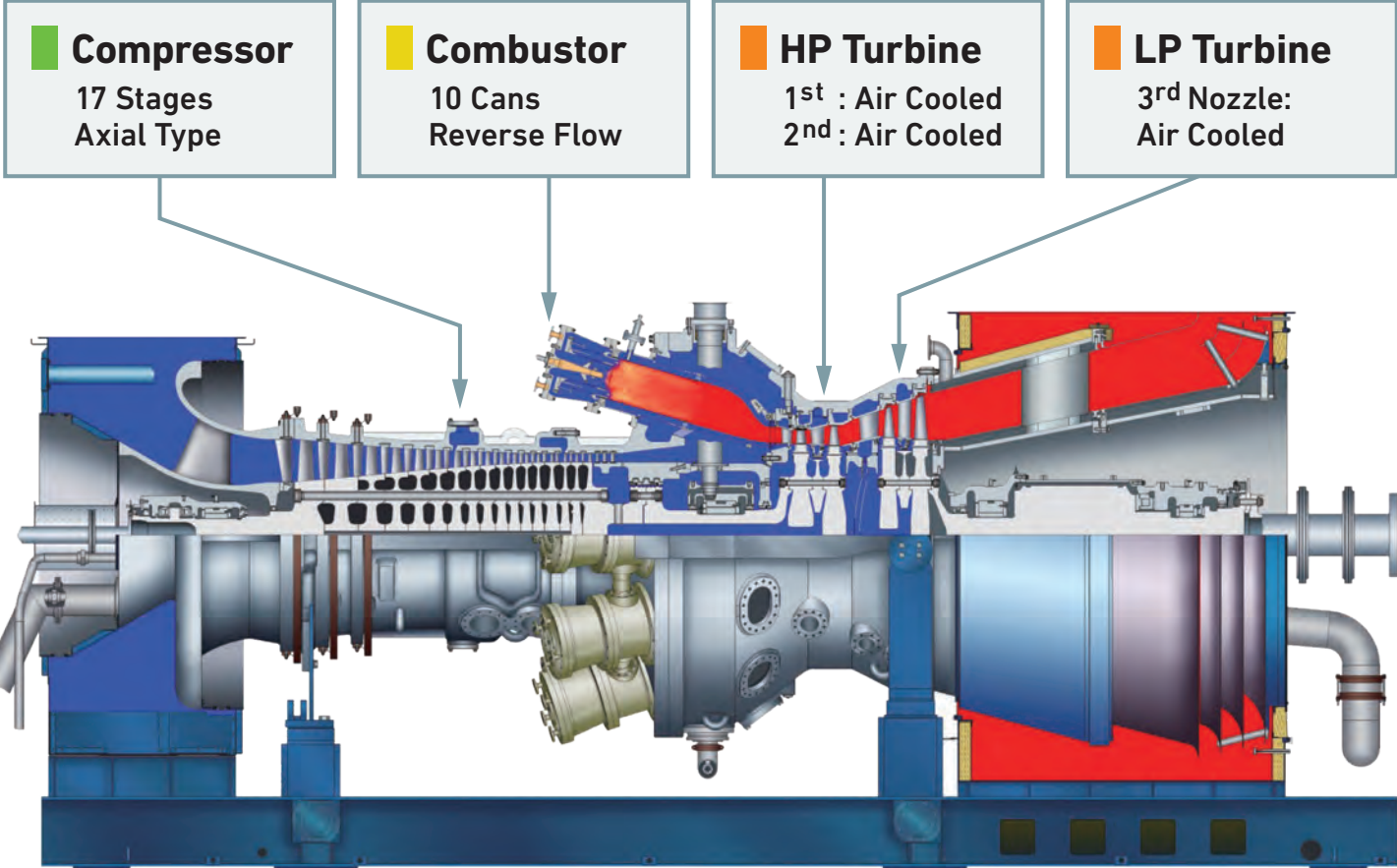
- 100-120MW Class Heavy Duty Gas Turbine
- High Efficiency
- No Reduction Gear with Two Shafts
- Applicable for Mechanical Drive
- Environmentally Friendly Combustion System
- Suitable for Cogeneration and Combined Cycle Power Plant

Mechanical Drive Performance

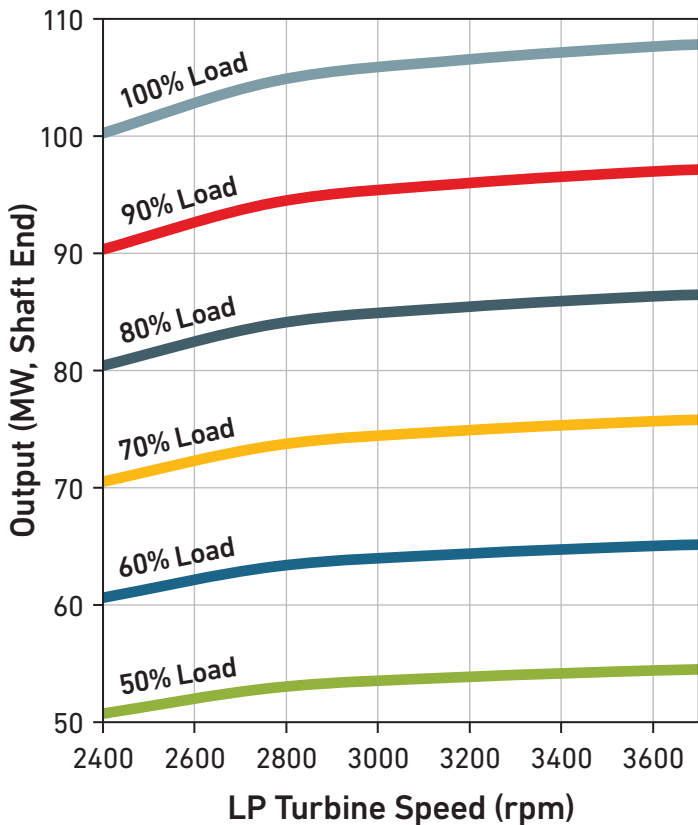
Item		H-100	
Output	[kW]	107,650	119,900
Rotating Speed	[rpm]	3,600 (2520-3780)	3,000 (2100-3150)
Efficiency	[%-LHV]	38.9	38.9
Heat Rate	[kJ/kWh]	9,256	9,266
NOx Emission	[ppm@15%O ₂]	9	9

-All ratings are defined at ISO standard reference conditions: 101.3kPa, Ambient Temp. 15 deg.C and 60%RH.

-All ratings are at the gas turbine shaft end and based on the natural gas fuel.



H-100 Rated LP turbine Speed
3,600 rpm
Ambient Temp.: 15deg.C



H-100 Rated LP Turbine Speed
3,000 rpm
Ambient Temp.: 15deg.C

