

FT8[®] MOBILEPAC[®] Gas Turbine Package

The MOBILEPAC[®] gas turbine package utilizes the proven FT8[®] aero-derivative engine to deliver 30 MW of fast, flexible, and mobile power, ideal for your most demanding applications.

- Compact footprint; requires minimal site prep and no concrete foundation
- Unique, modular design for global transport by land, sea, or air
- Rapid mobilization and demobilization with minimal resources



IDEAL SOLUTION:



Handles difficult operational profiles, characterized by large and sudden changes in power demand, making this equipment the superior solution for emergency power, grid support for intermittent renewable generation, distributed generation, and O&G (hydraulic fracking).

FLEXIBLE:



Accommodates variable site configurations, a variety of liquid and gas fuels, black start and a wide range of voltage and frequency requirements, and remote operations.

FAST POWER:



Quick start and ramp to full power, plus the ability to quickly turn down to less than 600 kW, gives you the peace of mind you need to respond to challenging grid conditions, while keeping the unit online and ready to react.

LIFE CYCLE PARTNER:



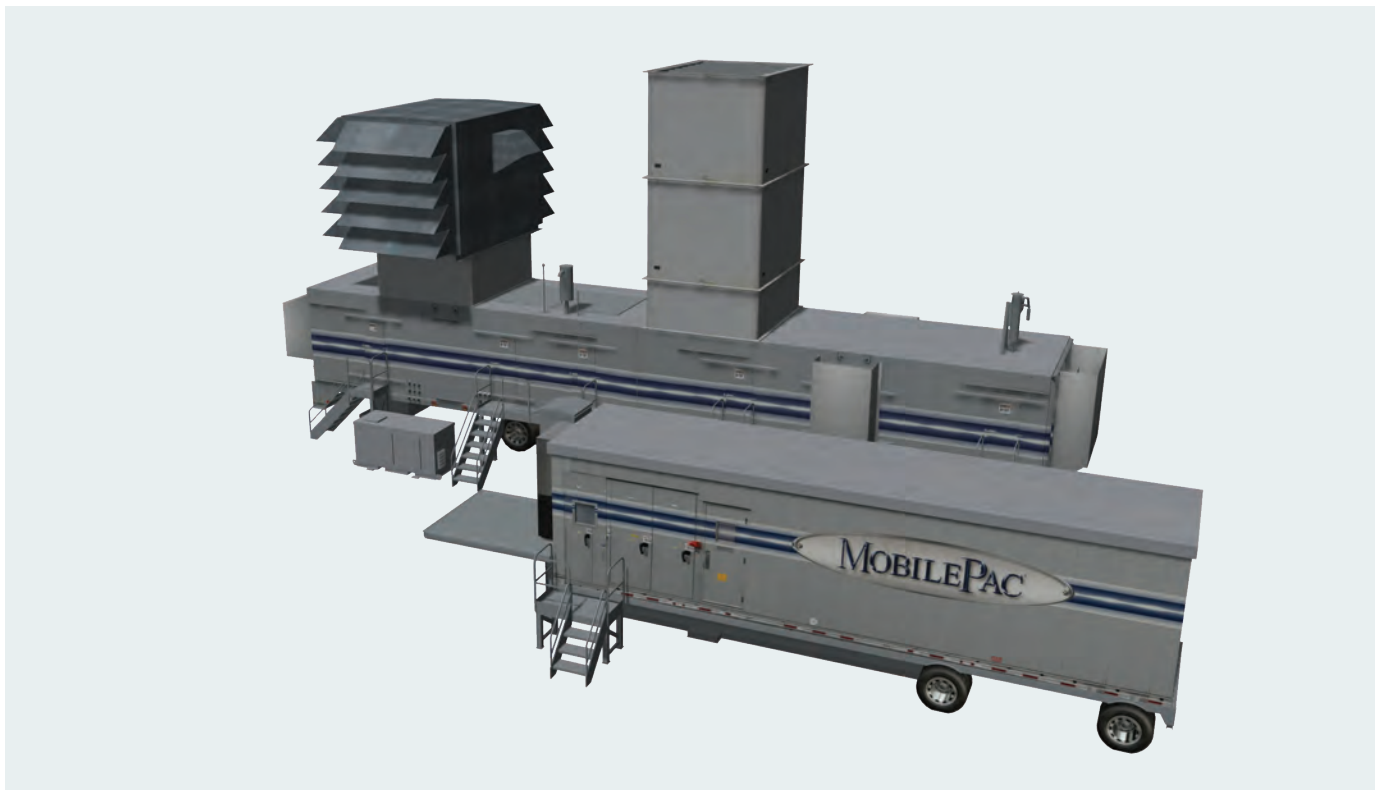
Mitsubishi Power Aero is your partner for the life cycle of your power assets. Our collaborative approach and easy access to technical experts and executives allow us to develop tailored solutions to address your challenges efficiently while maximizing your resources.

Model	ISO Base Rating (kW)	Heat Rate LHV (Btu/kWh)	Heat Rate LHV (kJ/kWh)	Efficiency
FT8® MOBILEPAC® 50 Hz	28,528	9,834	10,376	34.7%
FT8® MOBILEPAC® 60 Hz	30,941	9,312	9,825	36.7%

72' x 53' (allows easy access and necessary clearance)

Configurations: parallel (shown below), in-line, or perpendicular

48 hours to shut down → relocate → restart



SPOTLIGHT: MOBILEPAC® Delivers for Upstream O&G Production

The FT8® MOBILEPAC® has successfully performed in many difficult power generation applications, including hydraulic fracturing operations. Mitsubishi Power Aero MOBILEPAC® units have been delivering outstanding performance for our customer, which provides fully electric, fully mobile well stimulation services powered by natural gas. Result: Fracking operations that are quieter, safer, more fuel efficient, and less disruptive to neighboring communities and the environment.