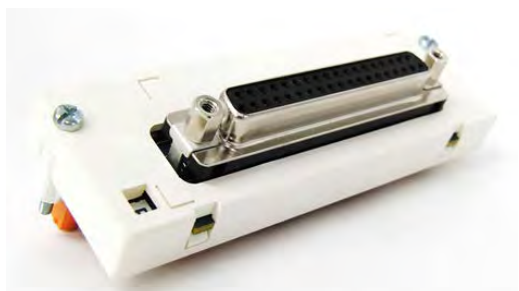


LSACT11-R IO backplane connector

Connector type, D-sub, Screw latch, Dsub connector type, 37pins

Summary



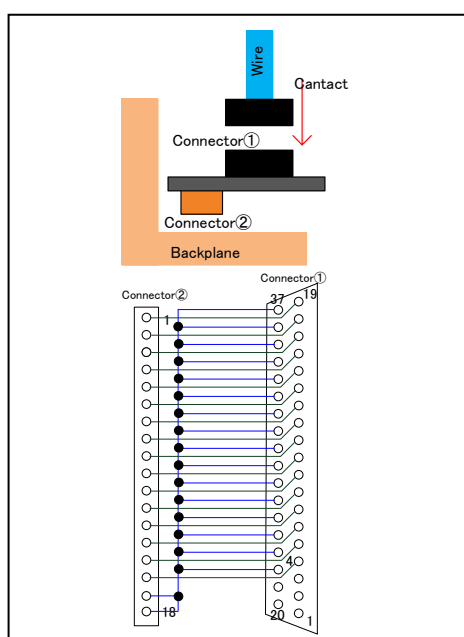
- * Wire holding structure : Connector type
- * Connector lock type : Screw latch
- * Number of pins : 37 (D-Sub Socket)

Specifications

ITEM		SPECIFICATION
Classification		Dsub connector type
Attachment position		IO backplane terminal(Right side)
Number of pins		37pins (2 rows, 19pins + 18pins)
Pitch		2.76mm (Alternate)
Wire holding structure		Connector type
Maximum insertion cycle		200
Power supply		300VAC
Rated current		3A
Dielectric strength		1000VAC (Between neighbor pins)
D-sub connector		37pins D-sub socket type (pair connector type: XM3A, plug type)
Wire size		Solid/ Flexible:0.08 to 0.3mm ² (AWG28 to AWG23)
Protection		Safe from finger touch
Flamability class UL94		V-2
Compatible terminal bases		LSIOB01, LSIOB02
Environmental conditions	Ambient temperature	(Operating) -5 to 60°C (Storage) -25 to 55°C
	Ambient humidity	(Operating) Not specified (Storage) Less than 80%RH (No condensation)
Weight		0.06kg
Dimensions		32.6mmD x 34.3mmH x 102.0mmW (Except projection)

*About compliant module type

For compliant modules of this product, please refer to “ Compliant accessory connector list (CGS-S9902-E-XX) ”.

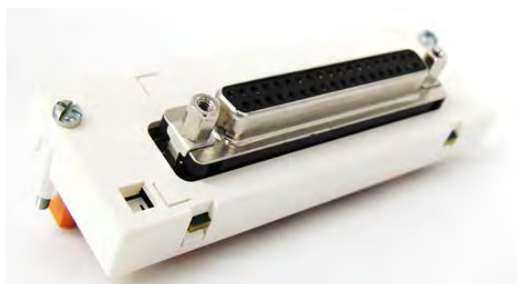


When using, please read the instruction manual attached to the product carefully and use it properly.
This catalog may not be distributed or reproduced in whole or in part without permission.
Please be aware that due to product improvements and modifications, the product description in this catalog may differ in certain respects from the actual product.
The service names and product names of other companies described in this catalog are the trademarks of each company.

LSACT11-L IO backplane connector

Connector type, D-sub, Screw latch, Dsub connector type, 37pins

Summary



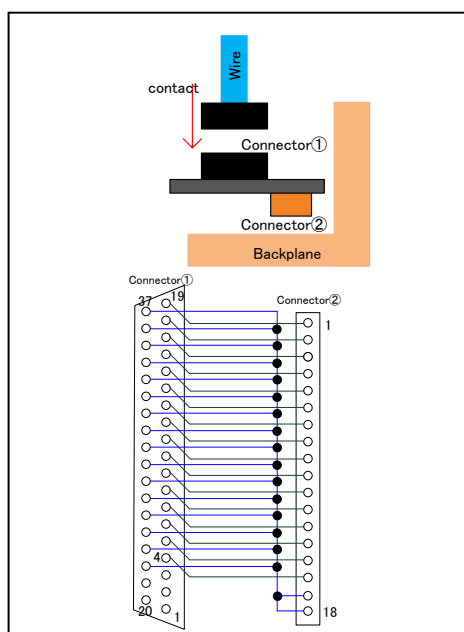
- * Wire holding structure : Connector type
- * Connector lock type : Screw latch
- * Number of pins : 37 (D-Sub Socket)

Specifications

ITEM		SPECIFICATION
Classification		Dsub connector type
Attachment position		IO backplane terminal(Left side)
Number of pins		37 (2 rows, 19pins + 18pins)
Pitch		2.76mm (Alternate)
Wire holding structure		Connector type
Maximum insertion cycle		200
Rated voltage		300VAC
Rated current		3A
Dielectric strength		1000VAC (Between neighbor pins)
D-sub connector		37pins D-sub socket type (pair connector type: XM3A, plug type)
Wire size		Solid/ Flexible:0.08 to 0.3mm ² (AWG28 to AWG23)
Protection		Safe from finger touch
Flamability class UL94		V-2
Compatible terminal bases		LSIOB01, LSIOB02
Environmental conditions	Ambient temperature	(Operating) -5 to 60°C (Storage) -25 to 55°C
	Ambient humidity	(Operating) Not specified (Storage) Less than 80%RH (No condensation)
Weight		0.06kg
Dimensions		32.6mmD x 34.3mmH x 102.0mmW (Except projection)

*About compliant module type

For compliant modules of this product, please refer to “ Compliant accessory connector list (CGS-S9902-E-XX) ”.



When using, please read the instruction manual attached to the product carefully and use it properly.
This catalog may not be distributed or reproduced in whole or in part without permission.
Please be aware that due to product improvements and modifications, the product description in this catalog may differ in certain respects from the actual product.
The service names and product names of other companies described in this catalog are the trademarks of each company.